

TITLE ASHTON CANOPY ASSEMBLY (GRP COVERED)



**Canopy Products Ltd**

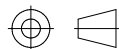
Blackwood Mill  
Blackwood Road  
Bacup OL13 0PZ  
Tel 01706 82 2665  
[www.canopyproducts.co.uk](http://www.canopyproducts.co.uk)

MATERIAL EUROPEAN RED DEAL V

TREATMENT DIP TREATED

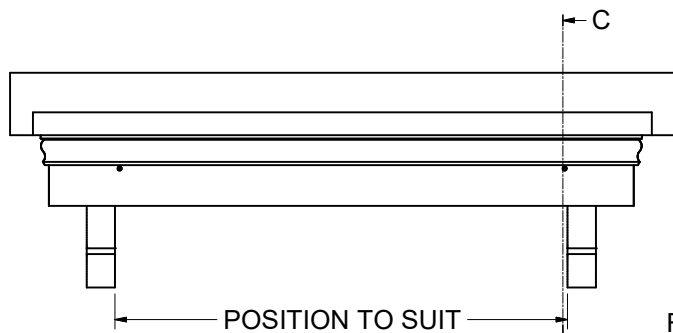
SCALE	DRN	DATE
	R. SPENCER	10-Feb-22

DRG. No. F-ASH-GRP-1470-690

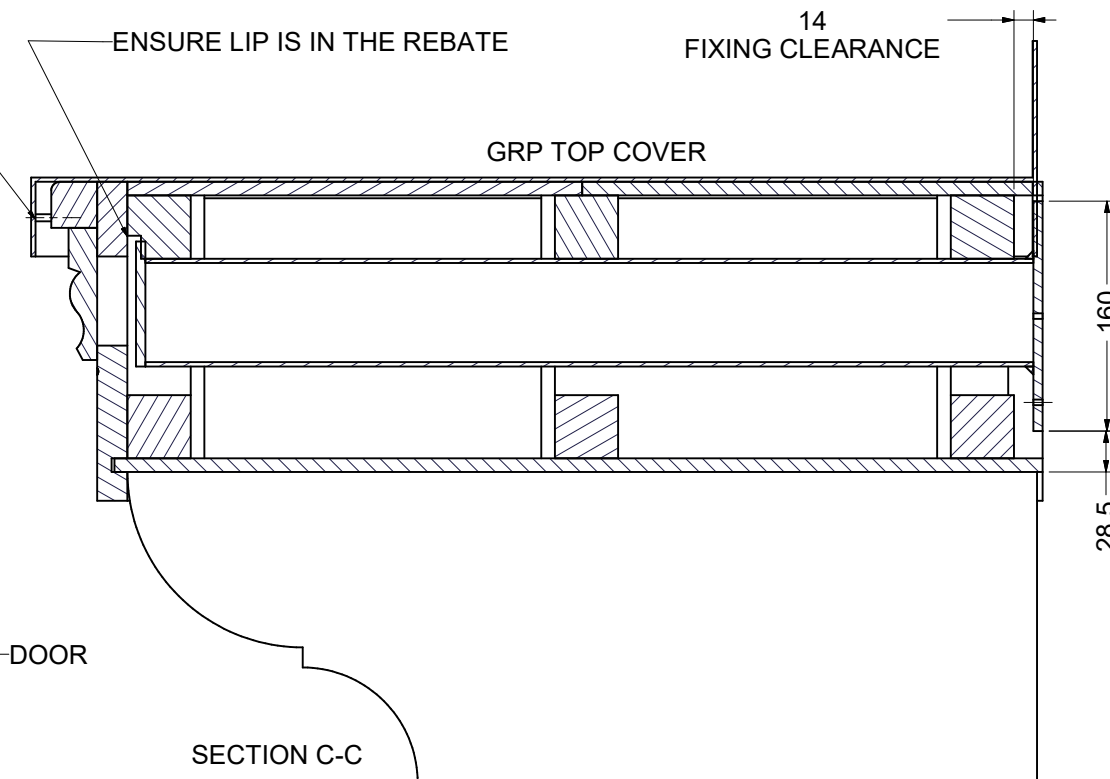
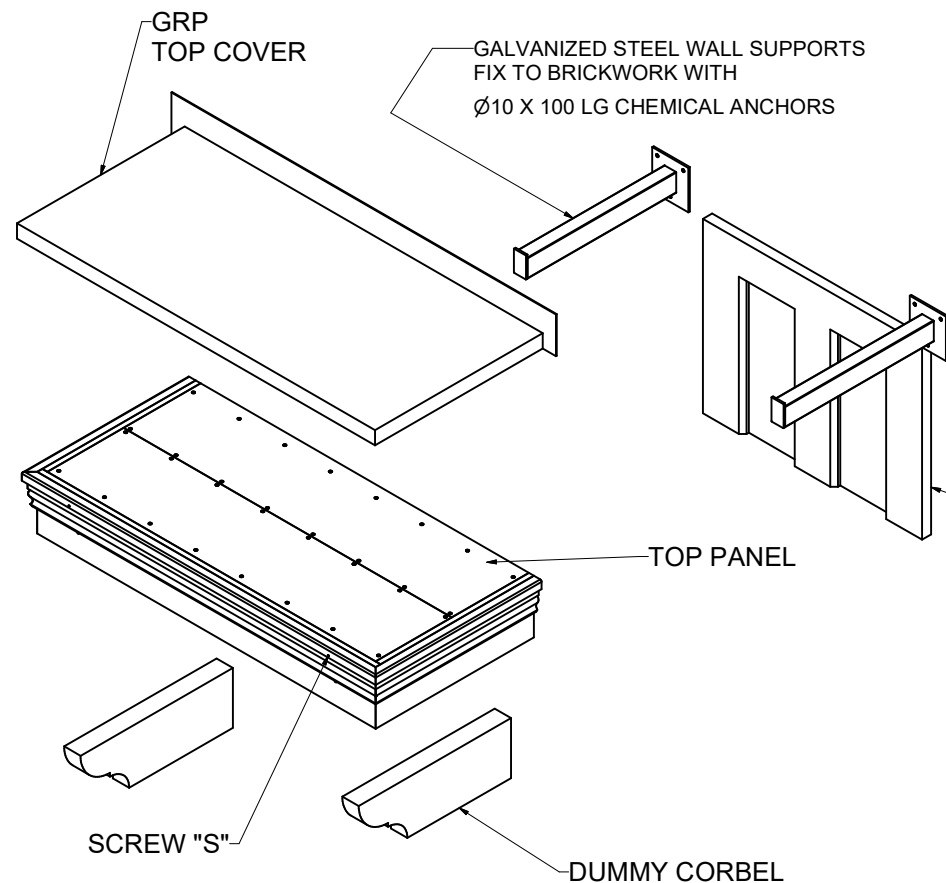


### ASSEMBLY INSTRUCTIONS

DECIDE YOUR PREFERRED LOCATION OF THE DUMMY CORBELS ON THE UNDERSIDE OF THE CANOPY AND FIX WITH SCREWS. ACCESS FOR SCREWS IS OBTAINED BY REMOVING THE TOP PANELS. POSITION THE GALVANISED STEEL WALL SUPPORTS CENTRALLY AROUND DOOR FRAME TO GIVE YOUR DESIRED CANOPY HEIGHT. LIFT WOODEN CANOPY ONTO THE WALL BRACKETS ENSURING THE LIP ON THE END OF THE STEEL SUPPORT IS ENGAGED IN THE REBATE WITHIN THE CANOPY CARCASS. CENTRALISE THE CANOPY AROUND DOOR FRAME AND FIT SCREWS "S" TO PREVENT REMOVAL. FIT GRP TOP COVER AND SEAL AT WALL. THE GRP PANEL LOCATES WITH TWO STUDS INSIDE FRONT LIP TO PREVENT LIFT WHEN FITTED.



FRONT LOCATING STUDS



SECTION C-C

TITLE ASHTON CANOPY ASSEMBLY (GRP COVERED)



**Canopy Products Ltd**

Blackwood Mill  
Blackwood Road  
Bacup OL13 0PZ  
Tel 01706 82 2665  
www.canopyproducts.co.uk

MATERIAL		EUROPEAN RED DEAL V	
TREATMENT		DIP TREATED	
SCALE	DRN	DATE	
	R. SPENCER	10-Feb-22	
DRG. No.			
E-ASH-GRP-1470-690			